

What's new in Solid Edge P&ID Design

Access pipe specifics at any stage and streamline the workflow process

Benefits

- Delivers faster creation of process and instrumentation diagrams
- Integrates with Solid Edge Piping Design
- Includes an intelligent database and a report generator
- Offers design checks

Features

- Supports industry standards and streamlines workflow process
- Database easily creates pipelines and adds symbols
- Ability to access pipe specifics at any stage
- Easily add/maneuver components within a diagram
- Assign unique tag numbers to fully define components
- Generate lists, reports, BOMs and intelligent PDFs when needed

Summary

The ability to accurately and rapidly create piping and instrumentation diagrams (P&ID) is crucial for meeting company and international quality standards. Solid Edge® software product P&ID Design supports project managers from start to finish with a full toolbox of traceability benefits. Users can easily capture the design intent and logic in a 2D schematic using Solid Edge P&ID Design. With the addition of 3D computer-aided design (CAD) or direct integration with Solid Edge Piping Design, users can take 2D P&IDs and develop them into a comprehensive 3D model of a process plant.

What is included

Solid Edge piping and instrumentation diagram design is a standalone 2D solution. However, Solid Edge P&ID Design can be integrated with Solid Edge Piping Design as well be an add-on to a Solid Edge 2019 message passage interface (MPI) license or newer. The included to-do list function provides the user an online or integrated connection between the P&ID and a 3D assembly. In the to-do list, the available definitions created in the P&ID can be transferred to the Solid Edge assembly and control the automated 3D pipeline creation.

Extending value

Solid Edge is a portfolio of affordable, easy to deploy, maintain and use software tools that advance all aspects of the product development process – mechanical and electrical design, simulation, manufacturing, technical documentation, data management and cloud-based collaboration.

What's new in Solid Edge P&ID Design

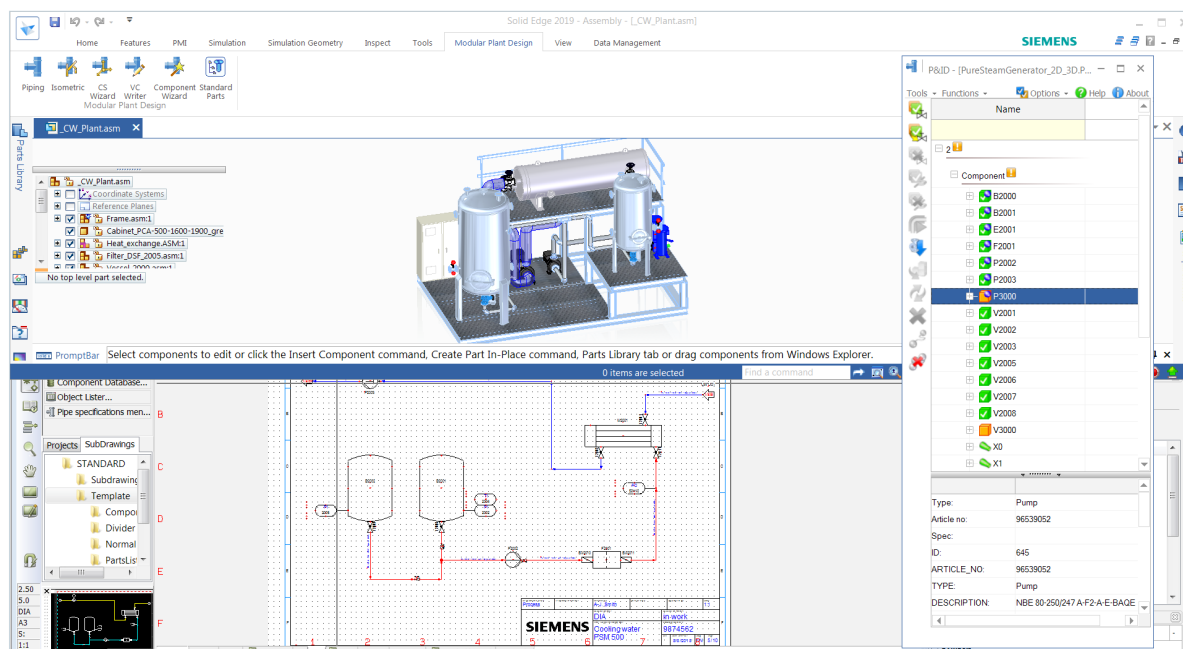


Figure 1: Solid Edge P&ID Design integrates well with Solid Edge Piping Design, allowing cross highlighting between modules

Recommended system requirements

- 64-bit Windows 7 or Windows 10 operating system
- Eight gigabytes (GB) random access memory (RAM) or more
- True color (32 bit) or 16 million colors (24 bit)
- Screen resolution: 1,280 by 1,024 or higher, widescreen format

Minimum system configuration

- Any of the above 64-bit operating systems
- Four GB RAM or more
- 65,000 colors
- Screen resolution: 1,280 by 1,024 or higher
- Six GB of disk space is required to install Solid Edge

Siemens PLM Software
www.siemens.com/plm

Americas +1 314 264 8499
 Europe +44 (0) 1276 413200
 Asia-Pacific +852 2230 3333

© 2018 Siemens Product Lifecycle Management Software Inc. Siemens, the Siemens logo and SIMATIC IT are registered trademarks of Siemens AG. Camstar, D-Cubed, Femap, Fibersim, Geolus, GO PLM, I-deas, JT, NX, Parasolid, Simcenter, Solid Edge, Syncrofit, Teamcenter and Tecnomatix are trademarks or registered trademarks of Siemens Product Lifecycle Management Software Inc. or its subsidiaries in the United States and in other countries. All other trademarks, registered trademarks or service marks belong to their respective holders.
 74352-A11 11/18 A